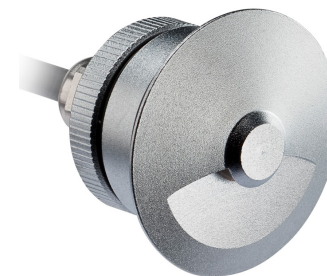


# LUX WALKWAY

Faretto LED da incasso per esterni adatto ad un'illuminazione di segnalazione e decorativa. Corpo in ottone cromato satinato. 1 LED ad alta resa, dotato di lente asimmetrica, vetro di protezione e pressacavo. Fissaggio tramite cassaforma in plastica LUXCASSA1 (non inclusa) o tramite molle sagomate in acciaio (incluse).



## 3000K

### LAMPING

Source	LED
Total power	1,2W
Emission	Asymmetric
Switching	according to driver
Tension	350mA
Color temperature	3000K
Luminous flux	10lm
Initial luminaire efficacy	<10lm/W
Initial chromaticity	SDCM < 3
Typ CRI	70
IP class	65
Dimensions	Ø4,4x5,0cm
Materials	Sanded chromed brass
Ambient temperature range	- 20°C / 35°
Performance ambient temperature	25°
Notes	driver not included, cable length 1m, series connection
Customization options	CCT 2700K
Accessories	Drivers 350mA,   Recessed box, Recessed box cassa 1
Net lamp weight	0,22 kg

### Codes

BLUX0201217WCS

### Structure

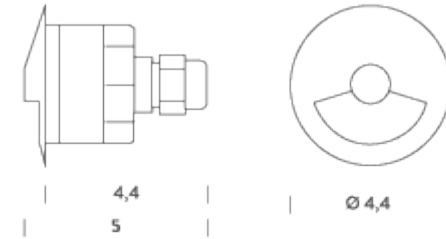
grey

### PACKAGE

Package 01

Dimension: 15x11x5 cm / Gross weight: 0,22 kg

### Certificazioni



## 5000K

### LAMPING

Source	LED
Total power	1,2W
Emission	Asymmetric
Switching	according to driver
Tension	350mA
Color temperature	5000K
Luminous flux	12lm
Initial luminaire efficacy	> 37lm/W
Initial chromaticity	SDCM < 3
Typ CRI	90
IP class	65
Dimensions	Ø4,4x5,0cm
Materials	Sanded chromed brass
Ambient temperature range	- 20°C / 35°
Performance ambient temperature	25°
Notes	driver not included, cable length 1m, series connection
Customization options	CCT 2700K
Accessories	Drivers 350mA,   Recessed box, Recessed box cassa 1
Net lamp weight	0,22 kg

### Codes

BLUX02012170CS

### Structure

grey

### PACKAGE

Package 01

Dimension: 105x11x2,5 cm / Gross weight: 0,45 kg

### Certificazioni

