

ILTI LUCE

SPOTLIGHTS and PROJECTORS outdoor

Lux Floor L



La gamma Lux Floor offre soluzioni per installazioni a pavimento, disponibili in una varietà di dimensioni (XS-S-M-**L**), finiture, temperature colore e fasci ottici. Ideale per illuminare percorsi e facciate.
The Lux Floor range provides versatile solutions for floor installations, available in several sizes (XS-S-M-**L**), finishes, color temperatures, and optical beams. Suitable for illuminating pathways and façades.

INFORMAZIONI GENERALI GENERAL INFORMATION	
Numero di sorgenti Number of light source	1
Tipo di ottica Optic type (beam angle)	17°/46°
Temperatura colore iniziale Initial Color Temperature	2700K/3000K/4000K
Indice di resa cromatica Color Rendering Index	>90
Tipo di ottica Optic type	lens
Trasformatore incluso Driver included	NO
Colore sorgente luminosa Light source color	white
Classe di protezione IEC IEC Protection class	III
Colore/finitura apparecchio Luminaire color/finish	alluminio anodizzato balck/grey balck/grey anodized aluminum
Montaggio Mounting	recessed mounted
Connessione Connections	wires
Cavo Cable	1m
Orientabile Adjustable	NO
Dimensioni Dimensions	Ø100x76mm
Peso netto (pezzo) Net weight (piece)	1,100Kg

FUNZIONAMENTO E PARTE ELETTRICA OPERATING AND ELECTRICAL	
Tensione/corrente di ingresso Input voltage/current	Max 700mA
Frequenza di ingresso Input frequency	/

CONTROLLI E REGOLAZIONE DEL FLUSSO CONTROL AND DIMMING	
Dimmerabile Dimmable	YES - According to driver
Controlli compatibili Compatible controls	1-10V/DALI/DMX/CASAMBI

RENDIMENTO INIZIALE INITIAL PERFORMANCE	
Flusso luminoso iniziale Initial luminous flux (system flux)	2271lm (3000k)
Tolleranza Flusso luminoso Luminous flux tolerance	+/- 10%
Efficienza iniziale apparecchio LED Initial LED luminaire efficacy	89lm/w
Cromaticità iniziale Initial chromaticity	SDCM<3
Potenza di ingresso iniziale Initial input power	Max 25,5W
Tolleranza consumo energetico Power consumption tolerance	+/- 10%

CONDIZIONI DI APPLICAZIONE APPLICATION CONDITION	
Intervallo temperatura ambiente Ambient temperature range	-20°C / 50°C (max 350mA)
Performance ambient temperature Performance ambient temperature	35°C

APPROVAZIONE E APPLICAZIONE APPROVAL AND APPLICATION	
Grado di protezione Ingress protection code	IP67
Codice protezione impatti meccanici Mechanical impact protection code	/

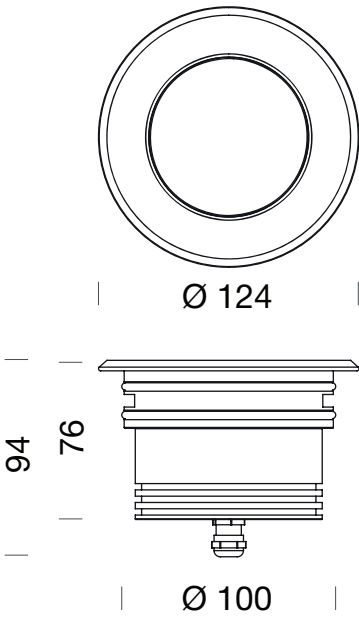
RENDIMENTO NEL TEMPO OVER TIME PERFORMANCE	
Mantenimento flusso luminoso vita media* 50000 h * Lumen maintenance at median useful life* 50000 h	L80

REMARKS



DISEGNO TECNICO
DIMENSIONAL DRAWINGS

Dimensioni (mm)
Dimensions (mm)



FINITURE STANDARD
STANDARD FINISHES



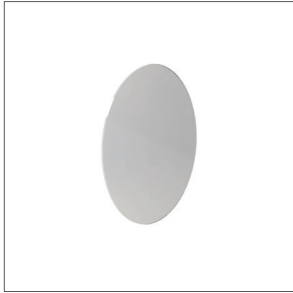
Ink Black



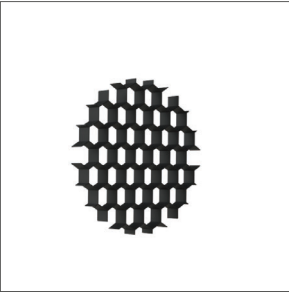
Silver Grey

ACCESSORI INTERNI
INTERNAL ACCESSORIES

OPAL FILTER (not included)

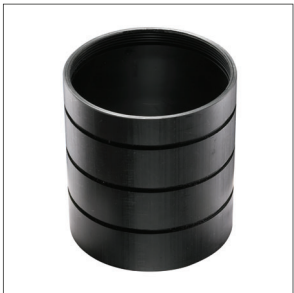


HONEYCOMB (not included)



ACCESSORI ESTERNI
EXTERNAL ACCESSORIES

BLUXR12BOX (not included)



CODICI
CODES

Codes	Description	Optics	CCT	Bezel	Finish
LXLFR0402DFAA	LUXFLOORL_14° 927 Flat AA/max 25,5W/max IN700mA	14°	2700K	flat	Silver Grey
LXLFR0402DFAN	LUXFLOORL_14° 927 Flat AN/max 25,5W/max IN700mA	14°	2700K	flat	Ink Black
LXLFR0402WFAA	LUXFLOORL_14° 930 Flat AA/max 25,5W/max IN700mA	14°	3000K	flat	Silver Grey
LXLFR0402WFAN	LUXFLOORL_14° 930 Flat AN/max 25,5W/max IN700mA	14°	3000K	flat	Ink Black
LXLFR0402NFAA	LUXFLOORL_14° 940 Flat AA/max 25,5W/max IN700mA	14°	4000K	flat	Silver Grey
LXLFR0402NFAN	LUXFLOORL_14° 940 Flat AN/max 25,5W/max IN700mA	14°	4000K	flat	Ink Black
LXLFR0405DFAA	LUXFLOORL_53° 927 Flat AA/max 25,5W/max IN700mA	53°	2700K	flat	Silver Grey
LXLFR0405DFAN	LUXFLOORL_53° 927 Flat AN/max 25,5W/max IN700mA	53°	2700K	flat	Ink Black
LXLFR0405WFAA	LUXFLOORL_53° 930 Flat AA/max 25,5W/max IN700mA	53°	3000K	flat	Silver Grey
LXLFR0405WFAN	LUXFLOORL_53° 930 Flat AN/max 25,5W/max IN700mA	53°	3000K	flat	Ink Black
LXLFR0405NFAA	LUXFLOORL_53° 940 Flat AA/max 25,5W/max IN700mA	53°	4000K	flat	Silver Grey
LXLFR0405NFAN	LUXFLOORL_53° 940 Flat AN/max 25,5W/max IN700mA	53°	4000K	flat	Ink Black